



Sealord Place  
MANUREWA



ARTIST IMPRESSION

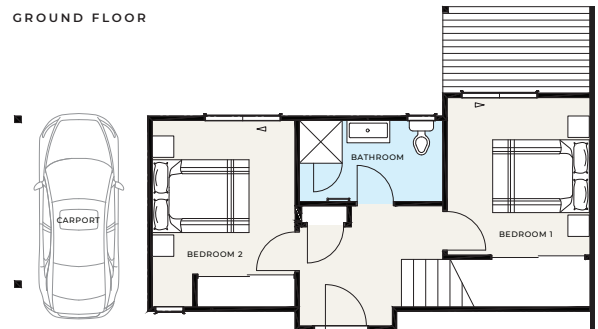
## Lot 17 - Sealord Place



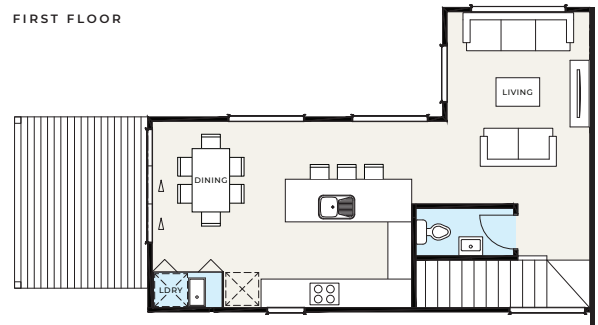
TOTAL FLOOR AREA **86 sq/m**  
LAND SIZE **105 sq/m**

- End of terrace townhouse on freehold title
- Elevated deck off the dining area
- Open plan kitchen with engineered stone benchtop, feature hanging pendant light and gooseneck tapware
- Kitchen appliance package including stainless dishwasher
- Heat pump and fully insulated - meets Healthy Homes
- Double glazed joinery throughout with large windows allowing for maximum natural light
- Off street parking - single
- 10-year Master Build Guarantee
- Interior Colour Scheme 1

GROUND FLOOR



FIRST FLOOR



Beautifully designed, affordable homes.





**Sealord Place**  
MANUREWA



## Interior Colour Palette - Scheme 1

Walls  
Ceilings/Trims  
Tiles  
Laminate Floor  
Carpet

Dulux Cardrona Half  
Dulux Southern Alps  
HER428 Ritz  
Oak  
Victoria Herrigan Inverness

Kitchen Cupboards  
Kitchen Benchtop  
Splashback  
Kitchen Tap  
Pendant Light

Melteca 'Baikal' Puregrain  
Engineered Stone - White w specs  
Glass - Mint  
Gooseneck - Chrome  
White



For direct sales contact:  
**Donald Gupta - 021 786 756**

PROUDLY BUILT BY  
**Finesse**  
Residential