



Sealord Place

MANUREWA



ARTIST IMPRESSION

Lot 16 - Sealord Place

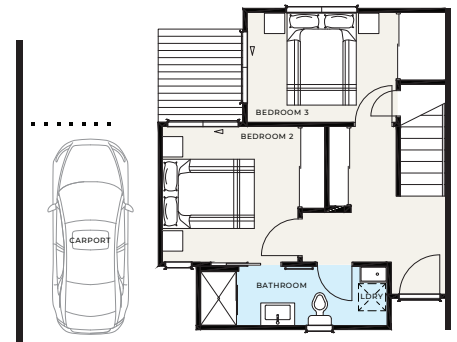


TOTAL FLOOR AREA **93 sq/m**

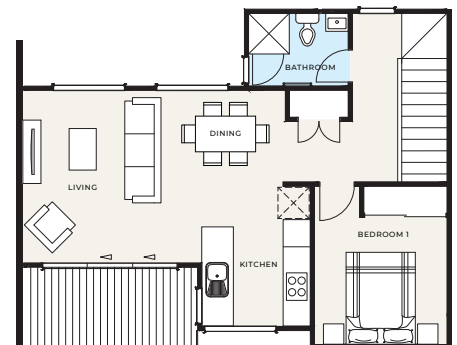
LAND SIZE **95 sq/m**

- Elevated deck off the living area
- Open plan kitchen with engineered stone benchtop, feature hanging pendant light and gooseneck tapware
- Kitchen appliance package including stainless dishwasher
- Heat pump and fully insulated - meets Healthy Homes
- Double glazed joinery throughout with large windows allowing for maximum natural light
- Off street parking - single
- 10-year Master Build Guarantee
- Freehold title
- Interior Colour Scheme 2

GROUND FLOOR



FIRST FLOOR



Beautifully designed, affordable homes.



Sealord Place
MANUREWA



Interior Colour Palette - Scheme 2

Walls
Ceilings/Trims
Tiles
Laminate Floor
Carpet

Dulux Mt Aspiring Half
Dulux Southern Alps
Urban Light Grey
Grey
Victoria Herrigan Mink

Kitchen Cupboards
Kitchen Benchtop
Splashback
Kitchen Tap
Pendant Light

Melteca 'Warm White' Puregrain
Engineered Stone - White w specs
Glass - Silver Ali
Gooseneck - Black
Black



BARFOOT & THOMPSON

For direct sales contact:
Donald Gupta - 021 786 756

PROUDLY BUILT BY
Finesse
Residential